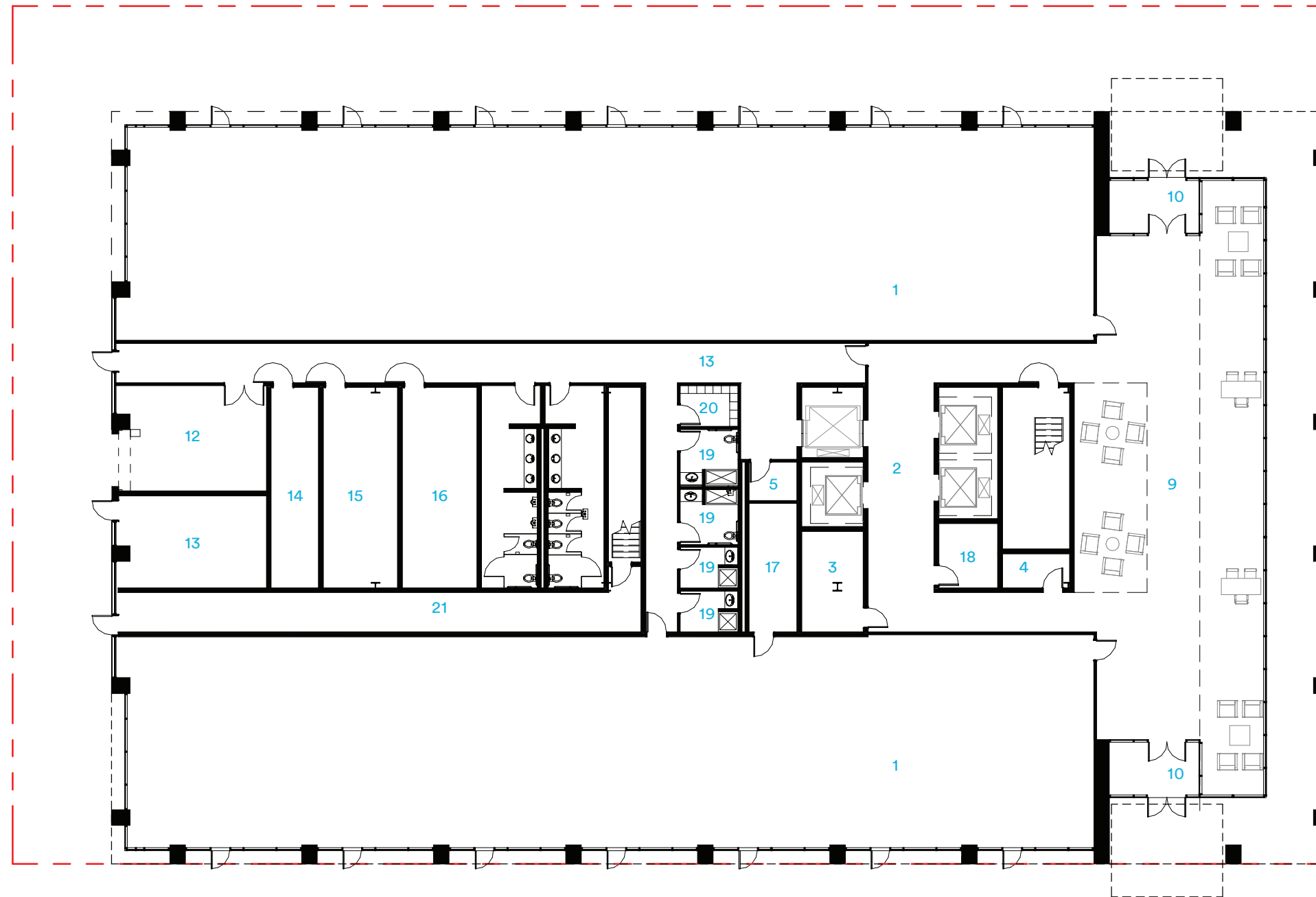


Ground Level 1 Plan



- 1 Tenant Space
- 2 Elevator Lobby
- 3 Communication Room
- 4 Electrical Room
- 5 Janitor
- 6 Elevator Overrun
- 7 Exterior Terrace
- 8 Mechanical Enclosure
- 9 Entry Lobby
- 10 Vestibule
- 11 Service Corridor
- 12 Trash and Recycling
- 13 Generator
- 14 Main Electrical
- 15 Electrical Vault
- 16 Emergency Distribution
- 17 Fire Pump Room
- 18 Fire Command Center
- 19 Unisex Shower Room
- 20 Locker Room
- 21 Exit Corridor

